

A Sample *Proceedings of the VLDB Endowment* Paper in LaTeX Format*

Ben Trovato[†]
Institute for Clarity in
Documentation
1932 Wallamaloo Lane
Wallamaloo, New Zealand
trovato@corporation.com

G.K.M. Tobin[‡]
Institute for Clarity in
Documentation
P.O. Box 1212
Dublin, Ohio 43017-6221
webmaster@marysville-
ohio.com

Lars Thørväld[§]
The Thørväld Group
1 Thørväld Circle
Hekla, Iceland
larst@affiliation.org

Lawrence P. Leipuner
Brookhaven Laboratories
Brookhaven National Lab
P.O. Box 5000
lleipuner@researchlabs.org

Sean Fogarty
NASA Ames Research Center
Moffett Field
California 94035
fogartys@amesres.org

Charles Palmer
Palmer Research Laboratories
8600 Datapoint Drive
San Antonio, Texas 78229
cpalmer@prl.com

ABSTRACT

The abstract for your paper for the PVLDB Journal submission. The template and the example document are based on the ACM SIG Proceedings templates. This file is part of a package for preparing the submissions for review. These files are in the camera-ready format, but they do not contain the full copyright note. Note that after the notification of acceptance, there will be an updated style file for the camera-ready submission containing the copyright note.

PVLDB Reference Format:

Ben Trovato, G. K. M. Tobin, Lars Thørväld, Lawrence P. Leipuner, Sean Fogarty, Charles Palmer, John Smith, Julius P. Kumquat, and Ahmet Sacan. A Sample Proceedings of the VLDB Endowment Paper in LaTeX Format. PVLDB, 12(xxx): xxxx-yyyy, 2019.

DOI: <https://doi.org/10.14778/xxxxxxx.xxxxxxx>

1. INTRODUCTION

The proceedings are the records of a conference. ACM, as well as PVLDB, seeks to give these conference by-products a uniform, high-quality appearance. To do this, ACM / PVLDB has some rigid requirements for the format of the proceedings documents: there is a specified format (balanced double columns), a specified set of fonts (Arial or

*for use with vldb.cls

[†]Dr. Trovato insisted his name be first.

[‡]The secretary disavows any knowledge of this author's actions.

[§]This author is the one who did all the really hard work.

This work is licensed under the Creative Commons Attribution-NonCommercial-NoDerivatives 4.0 International License. To view a copy of this license, visit <http://creativecommons.org/licenses/by-nc-nd/4.0/>. For any use beyond those covered by this license, obtain permission by emailing info@vldb.org. Copyright is held by the owner/author(s). Publication rights licensed to the VLDB Endowment.

Proceedings of the VLDB Endowment, Vol. 12, No. xxx
ISSN 2150-8097.

DOI: <https://doi.org/10.14778/xxxxxxx.xxxxxxx>

Helvetica and Times Roman) in certain specified sizes (for instance, 9 point for body copy), a specified live area (18×23.5 cm [$7'' \times 9.25''$]) centered on the page, specified size of margins (2.54cm [1"] top and bottom and 1.9cm [.75"] left and right; specified column width (8.45cm [3.33"] and gutter size (.083cm [.33"])).

The good news is, with only a handful of manual settings¹, the L^AT_EX document class file handles all of this for you.

The remainder of this document is concerned with showing, in the context of an "actual" document, the L^AT_EX commands specifically available for denoting the structure of a proceedings paper, rather than with giving rigorous descriptions or explanations of such commands.

2. THE BODY OF THE PAPER

Typically, the body of a paper is organized into a hierarchical structure, with numbered or unnumbered headings for sections, subsections, sub-subsections, and even smaller sections. The command `\section` that precedes this paragraph is part of such a hierarchy.² L^AT_EX handles the numbering and placement of these headings for you, when you use the appropriate heading commands around the titles of the headings. If you want a sub-subsection or smaller part to be unnumbered in your output, simply append an asterisk to the command name. Examples of both numbered and unnumbered headings will appear throughout the balance of this sample document.

Because the entire article is contained in the document environment, you can indicate the start of a new paragraph with a blank line in your input file; that is why this sentence forms a separate paragraph.

¹Two of these, the `\numberofauthors` and `\alignauthor` commands, you have already used; another, `\balancecolumns`, will be used in your very last run of L^AT_EX to ensure balanced column heights on the last page.

²This is the second footnote. It starts a series of three footnotes that add nothing informational, but just give an idea of how footnotes work and look. It is a wordy one, just so you see how a longish one plays out.

2.1 Type Changes and *Special Characters*

We have already seen several typeface changes in this sample. You can indicate italicized words or phrases in your text with the command `\textit`; emboldening with the command `\textbf` and typewriter-style (for instance, for computer code) with `\texttt`. But remember, you do not have to indicate typestyle changes when such changes are part of the structural elements of your article; for instance, the heading of this subsection will be in a sans serif³ typeface, but that is handled by the document class file. Take care with the use of⁴ the curly braces in typeface changes; they mark the beginning and end of the text that is to be in the different typeface.

You can use whatever symbols, accented characters, or non-English characters you need anywhere in your document; you can find a complete list of what is available in the L^AT_EX User's Guide[5].

2.2 Math Equations

You may want to display math equations in three distinct styles: inline, numbered or non-numbered display. Each of the three are discussed in the next sections.

2.2.1 Inline (In-text) Equations

A formula that appears in the running text is called an inline or in-text formula. It is produced by the math environment, which can be invoked with the usual `\begin. . .\end` construction or with the short form `$. . . $`. You can use any of the symbols and structures, from α to ω , available in L^AT_EX[5]; this section will simply show a few examples of in-text equations in context. Notice how this equation: $\lim_{n \rightarrow \infty} x = 0$, set here in in-line math style, looks slightly different when set in display style. (See next section).

2.2.2 Display Equations

A numbered display equation – one set off by vertical space from the text and centered horizontally – is produced by the equation environment. An unnumbered display equation is produced by the displaymath environment.

Again, in either environment, you can use any of the symbols and structures available in L^AT_EX; this section will just give a couple of examples of display equations in context. First, consider the equation, shown as an inline equation above:

$$\lim_{n \rightarrow \infty} x = 0 \quad (1)$$

Notice how it is formatted somewhat differently in the displaymath environment. Now, we'll enter an unnumbered equation:

$$\sum_{i=0}^{\infty} x + 1$$

and follow it with another numbered equation:

$$\sum_{i=0}^{\infty} x_i = \int_0^{\pi+2} f \quad (2)$$

just to demonstrate L^AT_EX's able handling of numbering.

³A third footnote, here. Let's make this a rather short one to see how it looks.

⁴A fourth, and last, footnote.

Table 1: Frequency of Special Characters

Non-English or Math	Frequency	Comments
Ø	1 in 1,000	For Swedish names
π	1 in 5	Common in math
\$	4 in 5	Used in business
Ψ_1^2	1 in 40,000	Unexplained usage

2.3 Citations

Citations to articles [1, 3, 2, 4], conference proceedings [3] or books [6, 5] listed in the Bibliography section of your article will occur throughout the text of your article. You should use BibTeX to automatically produce this bibliography; you simply need to insert one of several citation commands with a key of the item cited in the proper location in the .tex file [5]. The key is a short reference you invent to uniquely identify each work; in this sample document, the key is the first author's surname and a word from the title. This identifying key is included with each item in the .bib file for your article.

The details of the construction of the .bib file are beyond the scope of this sample document, but more information can be found in the Author's Guide, and exhaustive details in the L^AT_EX User's Guide[5].

This article shows only the plainest form of the citation command, using `\cite`. This is what is stipulated in the SIGS style specifications. No other citation format is endorsed.

2.4 Tables

Because tables cannot be split across pages, the best placement for them is typically the top of the page nearest their initial cite. To ensure this proper "floating" placement of tables, use the environment table to enclose the table's contents and the table caption. The contents of the table itself must go in the tabular environment, to be aligned properly in rows and columns, with the desired horizontal and vertical rules. Again, detailed instructions on tabular material is found in the L^AT_EX User's Guide.

Immediately following this sentence is the point at which Table 1 is included in the input file; compare the placement of the table here with the table in the printed dvi output of this document.

To set a wider table, which takes up the whole width of the page's live area, use the environment table* to enclose the table's contents and the table caption. As with a single-column table, this wide table will "float" to a location deemed more desirable. Immediately following this sentence is the point at which Table 2 is included in the input file; again, it is instructive to compare the placement of the table here with the table in the printed dvi output of this document.

2.5 Figures

Like tables, figures cannot be split across pages; the best placement for them is typically the top or the bottom of the page nearest their initial cite. To ensure this proper "floating" placement of figures, use the environment figure to enclose the figure and its caption.

This sample document contains examples of .pdf files to be displayable with L^AT_EX(See Figures 1 and 2). More details on each of these is found in the Author's Guide.

Table 2: Some Typical Commands

Command	A Number	Comments
<code>\alignauthor</code>	100	Author alignment
<code>\numberofauthors</code>	200	Author enumeration
<code>\table</code>	300	For tables
<code>\table*</code>	400	For wider tables



Figure 1: A sample black and white graphic (.pdf format).

Figure 2: A sample black and white graphic (.pdf format) that has been resized with the `\includegraphics` command.

As was the case with tables, you may want a figure that spans two columns. To do this, and still to ensure proper “floating” placement of tables, use the environment `figure*` to enclose the figure and its caption (See Figure 3). And don’t forget to end the environment with `figure*`, not `figure`!

Note that only .pdf files were used; if you want to include .ps or .eps formats, you can use the `\epsfig` or `\psfig` commands as appropriate for the different file types.

2.6 Theorem-like Constructs

Other common constructs that may occur in your article are the forms for logical constructs like theorems, axioms, corollaries and proofs. There are two forms, one produced by the command `\newtheorem` and the other by the command `\newdef`; perhaps the clearest and easiest way to distinguish them is to compare the two in the output of this sample document:

This uses the theorem environment, created by the `\newtheorem` command:

Theorem 1. Let f be continuous on $[a, b]$. If G is an antiderivative for f on $[a, b]$, then

$$\int_a^b f(t)dt = G(b) - G(a).$$

The other uses the definition environment, created by the `\newdef` command:

Definition 1. If z is irrational, then by e^z we mean the unique number which has logarithm z :

$$\log e^z = z$$

Two lists of constructs that use one of these forms is given in the Author’s Guidelines.

There is one other similar construct environment, which is already set up for you; i.e. you must not use a `\newdef` command to create it: the proof environment. Here is an example of its use:

Proof. Suppose on the contrary there exists a real number L such that

$$\lim_{x \rightarrow \infty} \frac{f(x)}{g(x)} = L.$$

Then

$$\begin{aligned} l &= \lim_{x \rightarrow c} f(x) = \lim_{x \rightarrow c} \left[gx \cdot \frac{f(x)}{g(x)} \right] \\ &= \lim_{x \rightarrow c} g(x) \cdot \lim_{x \rightarrow c} \frac{f(x)}{g(x)} = 0 \cdot L = 0, \end{aligned}$$

which contradicts our assumption that $l \neq 0$. \square

Complete rules about using these environments and using the two different creation commands are in the Author’s Guide; please consult it for more detailed instructions. If you need to use another construct, not listed therein, which you want to have the same formatting as the Theorem or the Definition[6] shown above, use the `\newtheorem` or the `\newdef` command, respectively, to create it.

A Caveat for the T_EX Expert

Because you have just been given permission to use the `\newdef` command to create a new form, you might think you can use T_EX’s `\def` to create a new command: Please refrain from doing this! Remember that your L^AT_EX source code is primarily intended to create camera-ready copy, but may be converted to other forms – e.g. HTML. If you inadvertently omit some or all of the `\defs` recompilation will be, to say the least, problematic.

3. CONCLUSIONS

This paragraph will end the body of this sample document. Remember that you might still have Acknowledgments or Appendices; brief samples of these follow. There is still the Bibliography to deal with; and we will make a disclaimer about that here: with the exception of the reference to the L^AT_EX book, the citations in this paper are to articles which have nothing to do with the present subject and are used as examples only.

4. ACKNOWLEDGMENTS

This section is optional; it is a location for you to acknowledge grants, funding, editing assistance and what have you. In the present case, for example, the authors would like to thank Gerald Murray of ACM for his help in codifying this Author’s Guide and the .cls and .tex files that it describes.

5. ADDITIONAL AUTHORS

Additional authors: John Smith (The Thørväld Group, jsmith@affiliation.org), Julius P. Kumquat (The Kumquat Consortium, jpkumquat@consortium.net), and Ahmet Sacan (Drexel University, ahmetdevel@gmail.com)

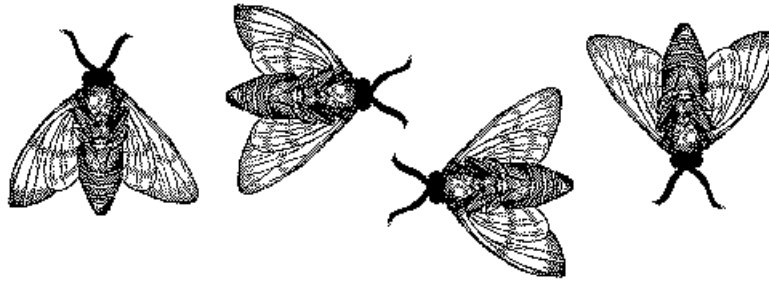


Figure 3: A sample black and white graphic (.pdf format) that needs to span two columns of text.

6. REFERENCES

- [1] M. Bowman, S. K. Debray, and L. L. Peterson. Reasoning about naming systems. *ACM Trans. Program. Lang. Syst.*, 15(5):795–825, November 1993.
- [2] J. Braams. Babel, a multilingual style-option system for use with latex’s standard document styles. *TUGboat*, 12(2):291–301, June 1991.
- [3] M. Clark. Post congress tristesse. In *TeX90 Conference Proceedings*, pages 84–89. TeX Users Group, March 1991.
- [4] M. Herlihy. A methodology for implementing highly concurrent data objects. *ACM Trans. Program. Lang. Syst.*, 15(5):745–770, November 1993.
- [5] L. Lamport. *LaTeX User’s Guide and Document Reference Manual*. Addison-Wesley Publishing Company, Reading, Massachusetts, 1986.
- [6] S. Salas and E. Hille. *Calculus: One and Several Variable*. John Wiley and Sons, New York, 1978.

6.1 References

Generated by bibtex from your .bib file. Run latex, then bibtex, then latex twice (to resolve references).

APPENDIX

You can use an appendix for optional proofs or details of your evaluation which are not absolutely necessary to the core understanding of your paper.

A. FINAL THOUGHTS ON GOOD LAYOUT

Please use readable font sizes in the figures and graphs. Avoid tempering with the correct border values, and the spacing (and format) of both text and captions of the PVLDB format (e.g. captions are bold).

At the end, please check for an overall pleasant layout, e.g. by ensuring a readable and logical positioning of any floating figures and tables. Please also check for any line overflows, which are only allowed in extraordinary circumstances (such as wide formulas or URLs where a line wrap would be counterintuitive).

Use the `balance` package together with a `\balance` command at the end of your document to ensure that the last page has balanced (i.e. same length) columns.