

# Erratum

## A database model for object dynamics

M.P. Papazoglou<sup>1</sup>, B.J. Krämer<sup>2</sup>

<sup>1</sup>Tilburg University, INFOLAB, P.O. Box 90153, 5000 LE Tilburg, The Netherlands; e-mail: mikep@kub.nl  
<sup>2</sup>FernUniversität Hagen, D-58084 Hagen, Germany; e-mail: bernd.kraemer@fernuni-hagen.de

The VLDB Journal (1997) 6: 73-96

Due to a technical error, some figures of the above paper were not reproduced satisfactorily. They are printed again below:

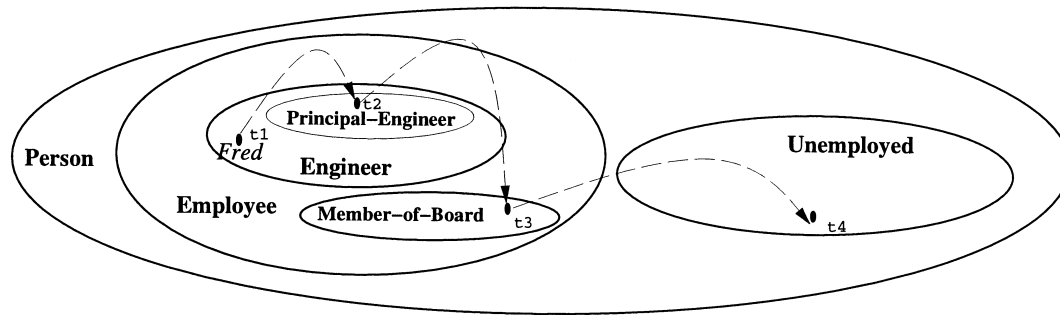


Fig. 1. Life cycle of the Fred object

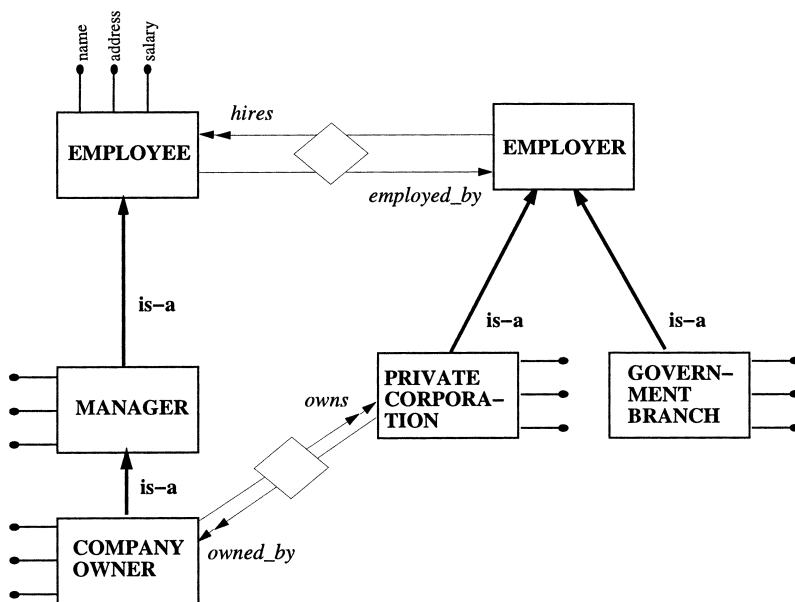


Fig. 2. A portion of the type DAG for an employee-employer object base

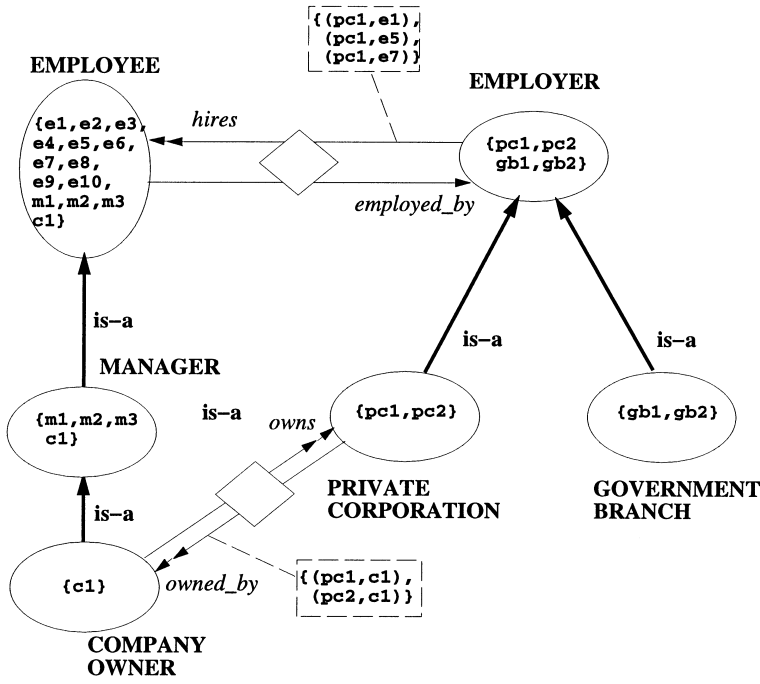


Fig. 3. The class hierarchy for the type schema in Fig. 2

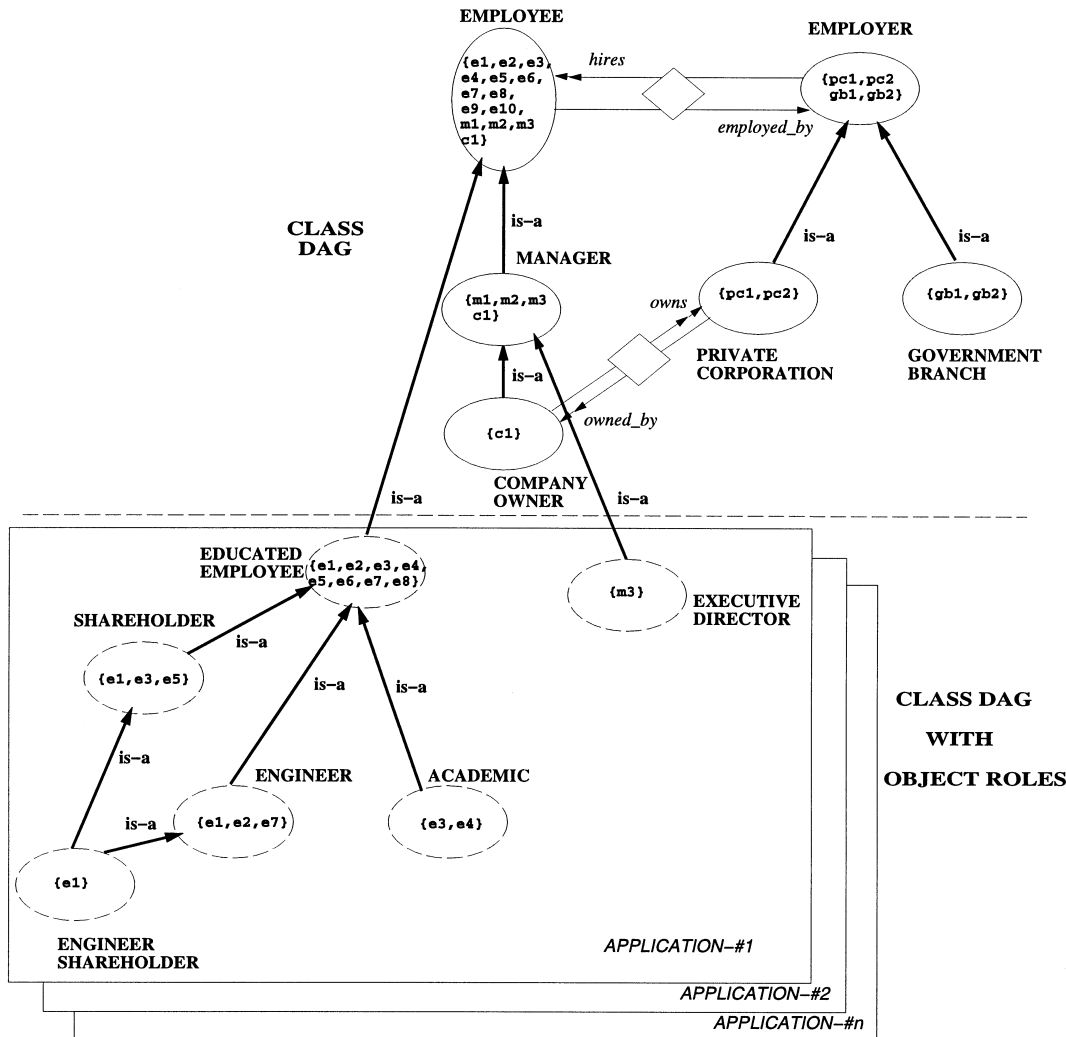


Fig. 4. The class hierarchy for the type schema in Fig. 2 evolved with roles

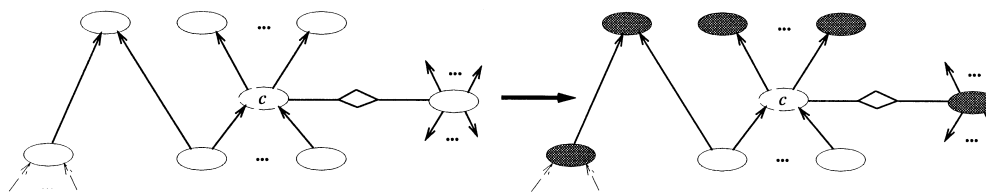


Fig. 5. Effect of deleting a role class *c* and the remaining shadow DAG

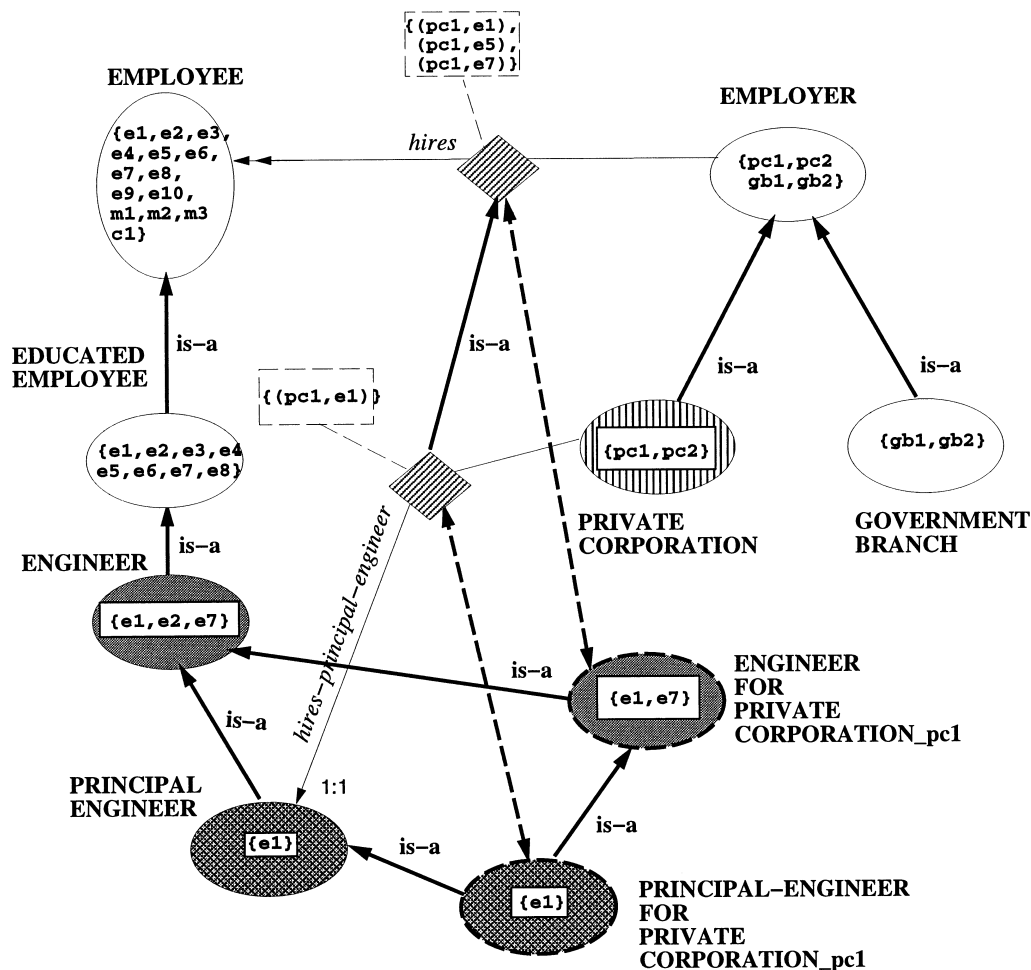


Fig. 10. Defining dynamic object roles via the use of relationships

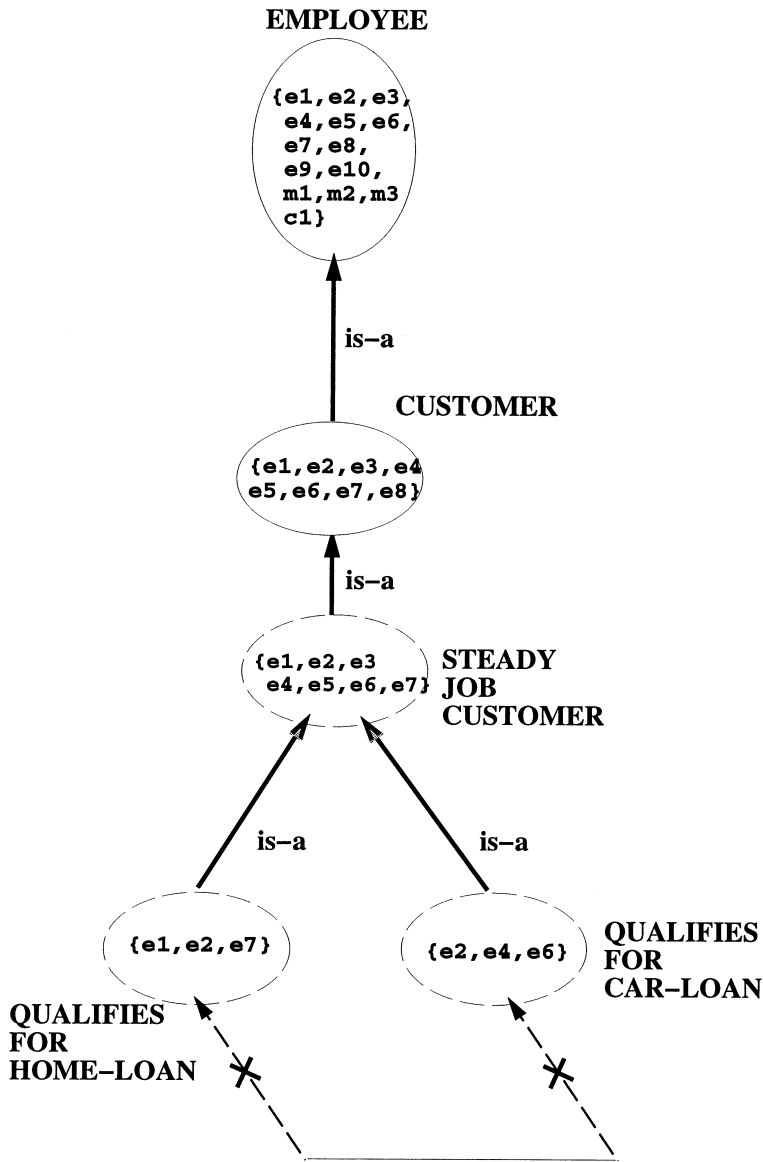


Fig. 11. Defining dynamic object roles via reasoning

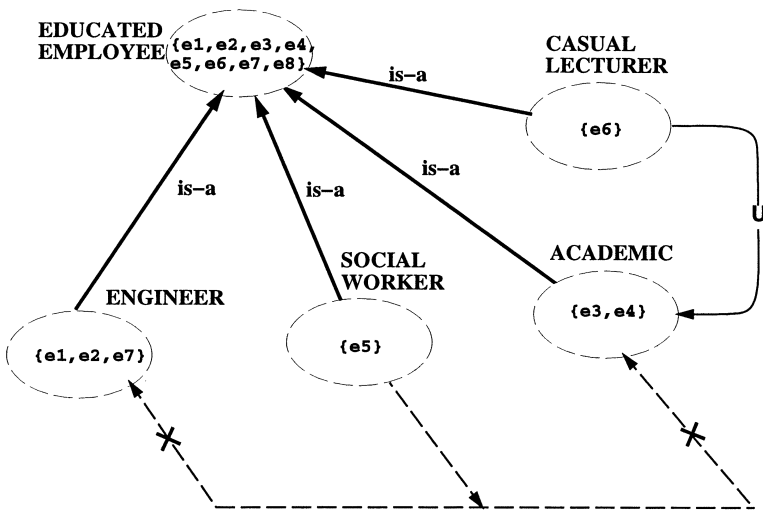


Fig. 12. Role delay and transformation